

Matanzas Dam Rehabilitation & Central Sonoma Watershed Project Plan-EA

Zone 1A Committee Mtg.
December 14, 2021



**Sonoma
Water**

Clean. Reliable. Essential. Every day.

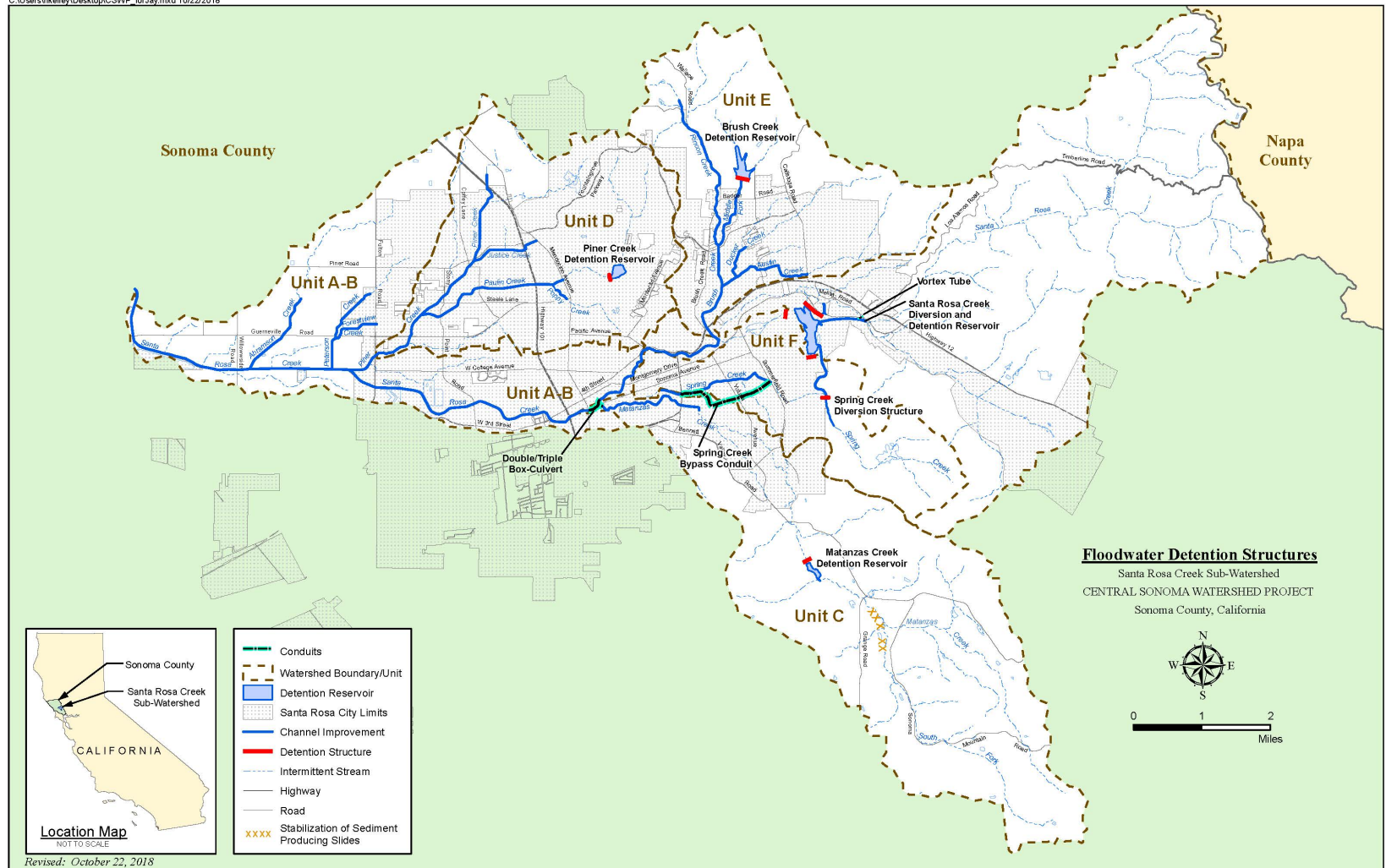


sonomawater.org



Central Sonoma Watershed Project

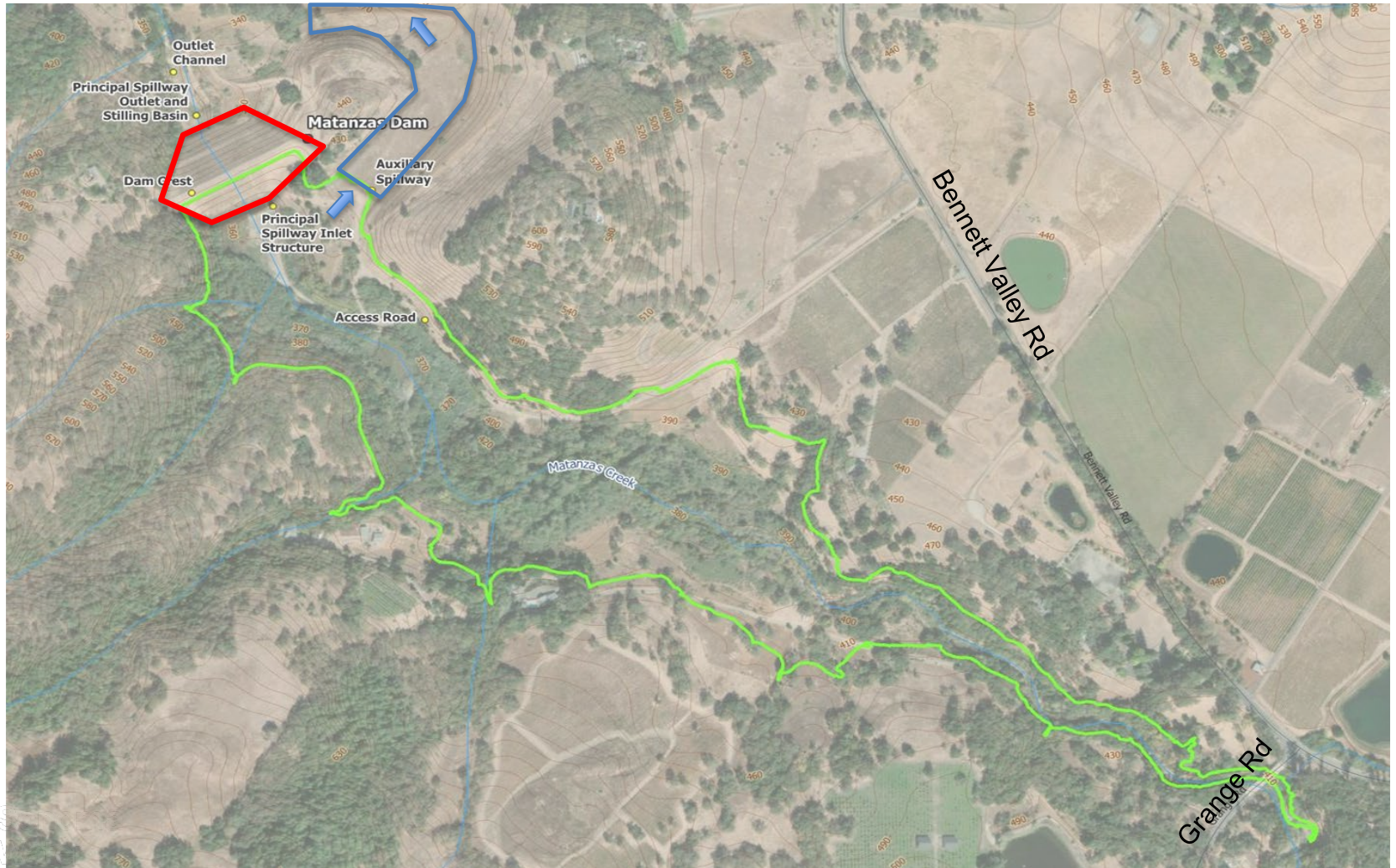
C:\Users\hkelley\Desktop\CSWP_forJay.mxd 10/22/2018



Matanzas Dam Rehabilitation



Matanzas Reservoir Facility



Central Sonoma Watershed Project

Matanzas Dam Rehabilitation



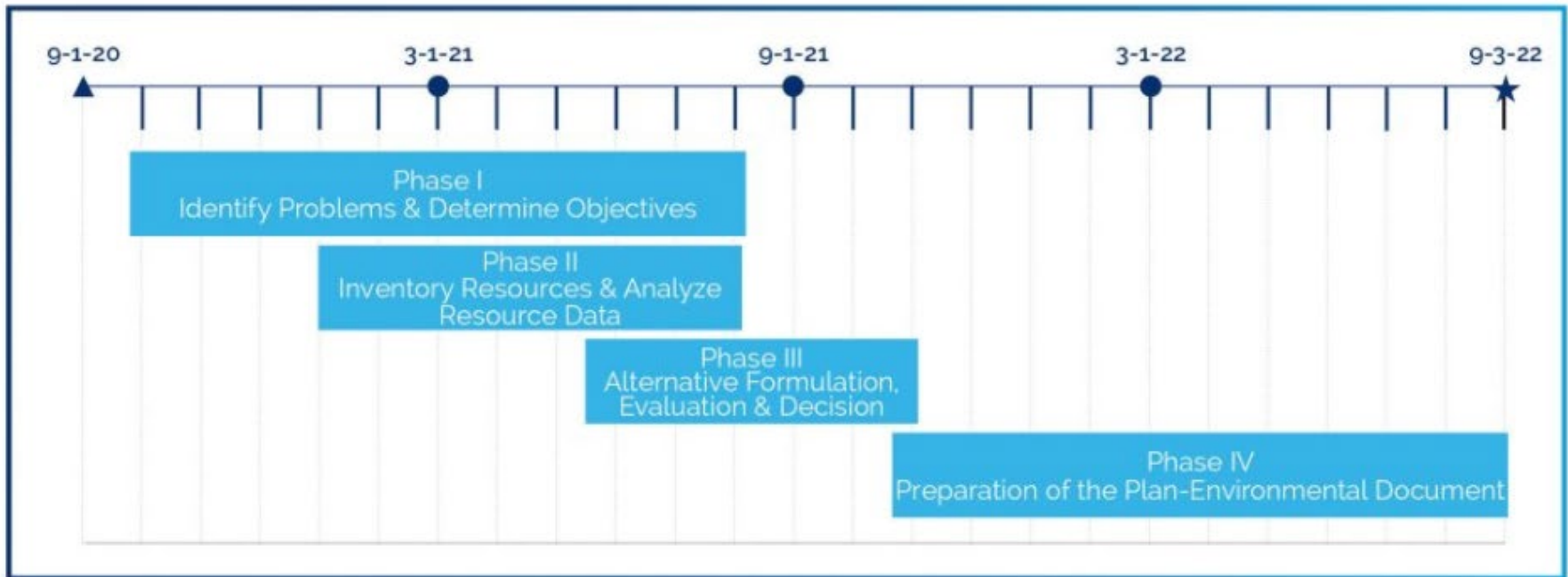
- 2016 Dam Assessment determined auxiliary spillway activates prior to design flood event
- Dam does not fully meet current design criteria
- Sonoma Water (Local Sponsor) requested NRCS assistance
- NRCS has now authorized \$1.71M for planning and design to address deficiency
- Scope of Work Includes
 - Public/Stakeholder Outreach
 - Geotechnical Investigations
 - Flood inundation modeling
 - Seismic Analysis
 - Alternatives Development & 30% Design
 - Economic Analysis
 - Environmental Compliance (NEPA)
 - Supplemental Plan-EA



Sonoma
Water

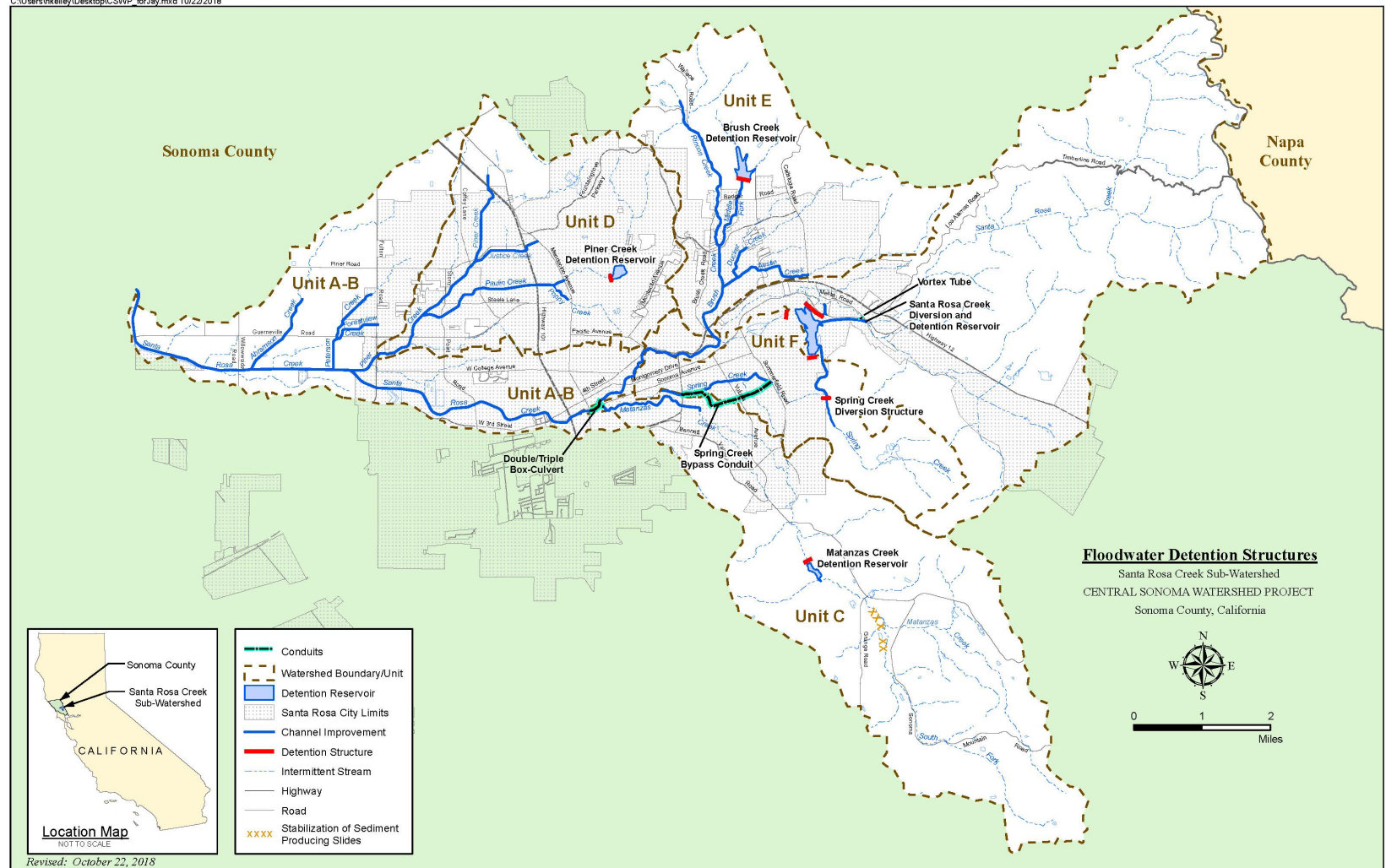
Matanzas Dam Rehabilitation

Led by NRCS's consultant – Sonoma Water as Local Sponsor



Central Sonoma Watershed Project Plan-EA

C:\Users\hkelley\Desktop\CSWP_forJey.mxd 10/22/2018



Central Sonoma Watershed Project

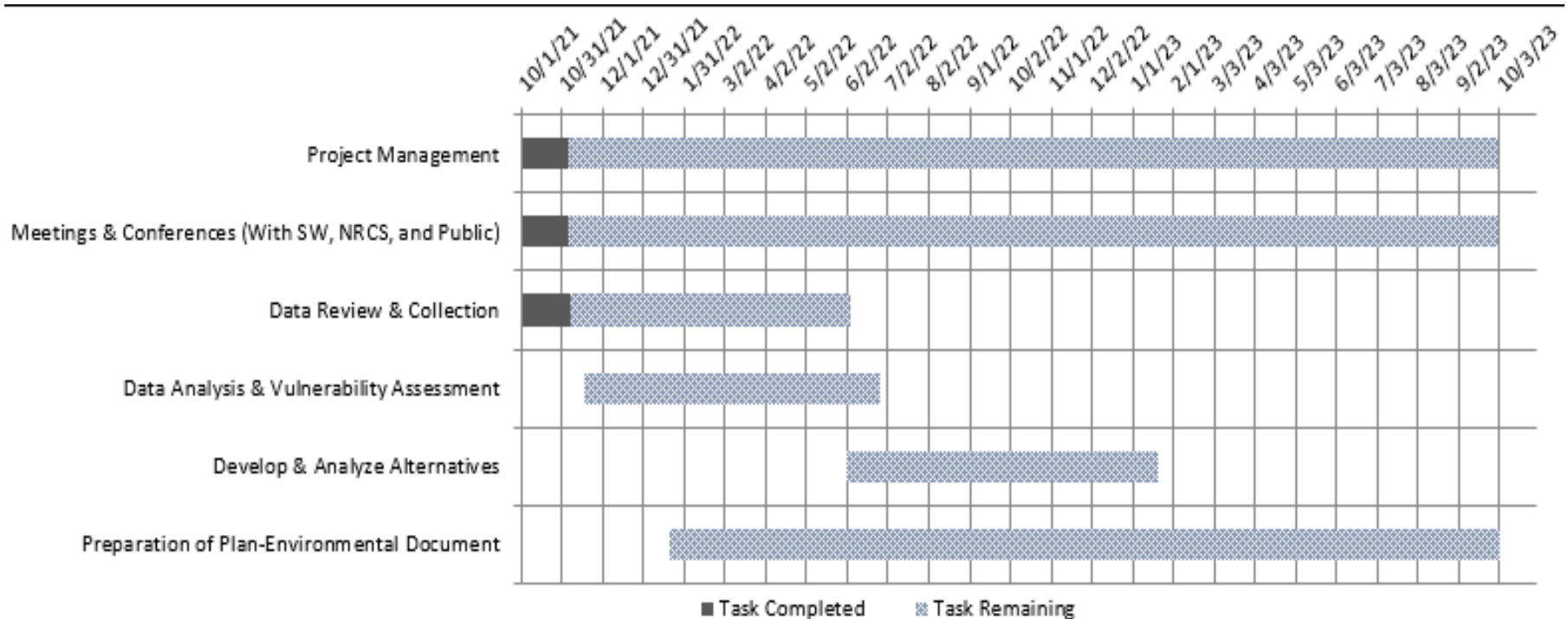
Watershed Plan-EA



- Sonoma Water as a Local Sponsor with technical support from a consultant team and NRCS.
- Comprehensive, system-wide vulnerability assessment capturing:
 - Structural inspections
 - Land use changes
 - Seismic data/mapping
 - Future climate conditions
 - Updated hydrology & hydraulics
- Result: New Watershed Plan-Environmental Assessment that includes alternatives to maintain or improve flood protection provided by CSWP.
 - Economic Evaluation
 - Public Engagement, Stakeholder Outreach
 - NEPA compliance
- Future Federal funding opportunities

CSWP Watershed Plan-EA

Led by Sonoma Water as Local Sponsor



Sonoma
Water

Project Website Forthcoming

Funding

Matanzas Dam Rehabilitation & Central Sonoma Watershed Plan-EA



Planning Phase

Matanzas Dam Rehabilitation

Federal Sponsor (NRCS):	\$1.71M
Local Sponsor (Zone 1A):	\$0.15M (FY 21/22)
Local Sponsor (Zone 1A):	<u>\$0.25M (FY 22/23)</u>
Total	\$2.11M

CSWP Plan-EA

Federal Sponsor (NRCS):	\$1.20M (FY 21/22)
Local Sponsor (Zone 1A):	\$0.44M (FY 21/22)
Local Sponsor (Zone 1A):	<u>\$0.25M (FY 22/23)</u>
Total	\$1.89M

Local Sponsor (Zone 1A) – \$1.12M

Federal Sponsor (NRCS) – \$2.91M



**Sonoma
Water**

Questions?





Sonoma
Water

